

Peace Lutheran Church

5675 Field Street, Arvada, CO 80002
303-424-4454 303-940-7683 (fax)

www.peacelutheran.net
Peace_Lutheran_Arvada
peace_lutheran_arvada



PeaceArvada
Peace Lutheran Church
Peace Lutheran Church

Peace Early Learning Center

303-424-4494 www.peaceelc.com

Peace Lutheran Social Ministry 303-424-4454 ex. 40



Office Hours: 8:30a—4p Monday—Thursday

ELC School Year Hours: 8:15a—4p (M-Fr)
Church Staff

- Contact using 303.424.4454 using the listed extensions or via email.
- **Senior Pastor:** Rev. Guy Roberts x15
 - **Associate Pastor:** Rev. Tim Lindeman x17
 - **Director of Ministries:** Dawn Lubker x11
 - **Adult Discipleship:** Kelsey Wilbern x22
 - **Director of NexGen Ministry:** Lauren Von Rentzell x25
 - **Director of Children's Ministry:** Lydia Massie x19
 - **Director of Worship Arts:** Jill Schroeder Dorn x21
 - **Ministry Assistant:** Sheryl Hofmeister x10
 - **Financial Controller:** Gary Crocker x13
 - **Financial Secretary:** Cathy Pierson 3/279.0530
 - **Facilities Manager:** Kent Patton x33
 - **Early Learning Center Director:** Angelica Gile 303.431.4494
 - **Security Team Leader:** Jay Steele 720.236.5285

Check out this week's blog by our staff:
<https://peacelutheran.net/blog>

- ext. 0 for the main line/office
groberts@peacelutheran.net
- tlindeman@peacelutheran.net
- dlubker@peacelutheran.net
- kwilbern@peacelutheran.net
- lvonrentzell@peacelutheran.net
- lmassie@peacelutheran.net
- jschroederdorn@peacelutheran.net
- shofmeister@peacelutheran.net
- gcrocker@peacelutheran.net
- crpierson@msn.com
- kpatton@peacelutheran.net
- earlylearning@peacelutheran.net
- security@peacelutheran.net

Sunday, November 3 All Saints' Celebration

ELC First Sunday Treats

- 8a Worship/Communion
- 9:15a Bible Classes for all ages
(see Prayer Page for listings/locations)
- 10:30a Worship/Communion/Confirmation

Monday, November 4

- 8a-4p Classical Conversations (downstairs)
- 8:15a-4p Early Learning Center (Ed. Wing)
- 6p Ringers of Peace (Sanctuary)
- 6:30p Lay Teacher Training (Community Room)

Tuesday, November 5

- 7a Men's Breakfast Bible Study (Community Rm)
- 8:15a-4p Early Learning Center (Ed. Wing)
- 10a Bible Study (A)
- 11a BNI (Community Room)
- 1p Lydia Circle (A)
- 3p Whiz Kids (lower level)

Wednesday, November 6

- 8:15a-4p Early Learning Center (Ed. Wing)
- 9a Staff Meeting (A)
- 5:30-6:20p Life Together Supper (Community Room)
- 6p Choir (Music Room)
- 6:30p Life Together Classes for all ages
(see Prayer Page for listings/locations)

Thursday, November 7

- 8:15a-4p Early Learning Center (Ed. Wing)

- 6:30p Jessen Small Group (B)
- 7p Divorce Care (A)
- Friday, November 8**
8:15a-4p Early Learning Center (Ed. Wing)
- Saturday, November 9**
10a GriefShare (A)
- Sunday, November 10**
Burritos by the youth
8a Worship/Communion
9:15a Bible Classes for all ages
Confirmation Testimonies (Community Room)
(see Prayer Page for listings/locations)
10:30a Worship/Communion

Pr Guy is scheduling Cottage Meetings where he'd like to meet with groups of 5-6 people either in a host home or at church. If you'd like to gather and host a few people, please call the church office to find available times and get more info. Thanks!



Sunday, November 3, 2024

All Saint's Celebration

How Our Brothers and Sisters In Guatemala Celebrate All Saint's Day

In Guatemala, All Saints' Day is a cherished occasion for families to remember and honor their loved ones who have passed away. This is done by visiting cemeteries and burial grounds. Each family takes it upon themselves to decorate, paint, and fill the resting places of their dear departed with vibrant flowers and an atmosphere of joy. Some cemeteries burst into a kaleidoscope of colors during this time. Sounds of mariachi music may fill the air, or the favorite tunes of the departed may be played. The primary objective is to pay homage to family members and fondly remember them with great affection.



Readings: Hebrews 11:1, 17-26, 32-34, 12:1-3 & Revelation 7:9-17

Sermon: True Hero's

Preacher: Pastor Tim Lindeman

Order of Worship 8a DS3 p 184
Welcome
677 For All the Saints
Invocation, Confession and Absolution
Gloria Patri Kyrie Hymn of Praise Collect
Readings Children's Message Gospel
Creed
Children's Message
761 Rock of Ages
Sermon
Greeting
First Fruits Offering
Prayers
Communion
637 Draw Near and Take the Body of the Lord
763 When Peace Like a River
Dialogue of Hope for the Living
Benediction
Announcements
680 Thine the Amen, Thine the Praise

Order of Worship 10:30a
Welcome/Invocation
677 For All the Saints
The Lion and the Lamb
Prayers
Readings
Creed
Gospel
Children's Message
Sermon
Greeting
Announcements
First Fruits Giving
Holy Holy Holy (Jesus Reigns)
Confession and Forgiveness
Communion
Revelation Song
Firm Foundation (He Won't)
Dialogue of Hope for the Living
Benediction Exit Song

WELCOME TO PEACE

Thank you for choosing to worship with us. If you're new here or have questions, please stop by the Got Questions Booth, across the hallway from the sanctuary. Visitors are welcome to pickup a Bible as our gift to you. Children are most welcome in the service, but should you need it, there is a nursery for infants through 3-years-old, and a cry room located near the entrance of the sanctuary. Please fill out the attendance card in the pew and hand it to an usher during communion or as you exit the church.

Thank you & God bless your week!

connect: nexgen ministry
 Lauren Von Rentzell Ivonrentzell@peacelutheran.net

SUNDAYS DU (Disciples Unlimited: Grades 9-12)

(Youth Room) Bible Study Sunday mornings at 9:15am

Rake 'N Run Nov. 9th 9-Noon

Join your PJ buddies! How fast and sneaky are you? We will be getting together to see how many of our elderly members we can surprise by sneaking into their yard and doing some yard clean up before getting caught! Some breakfast treats will be provided.

PJs (Peace Juniors: Grades 6 - 8)

Sundays @ 9:15a (Downstairs B) Confirmation Class for Grades 6 –8

Rake 'N Run Nov. 9th 9-Noon

How fast and sneaky are you? We will be getting together to see how many of our elderly members we can surprise by sneaking into their yard and doing some yard clean up before getting caught! Some breakfast treats will be provided.



WEDNESDAYS Grades 6-12 Youth Nights Dinner at 6p

Gather in the Youth Room at 6:30p
 November 13 Cocoa-venber Family Event
 December 4 A-Door-Able Intergenerational Event

connect: children

Lydia Massie lmassie@peacelutheran.net



Sign up for text updates for Children's Ministry.
 Text @peacechi to 81010 to join the list



Midweek

When: Wednesdays throughout the school year
Dinner @ 5:30p Activities @ 6:30pm
 Where: We will begin in the Community Room and the children (PK - 5th) will move, with their teachers, to activities. Pick-up in the Children's Center @ 7:30pm

Sunday School:

When: Begins September 8th @ 9:15am
 Where: We will begin in the Community Room and the children (PK - 5th) will move, with their teachers, to activities.
 Pick-up in classrooms @ 10:15am. (We will have signs up to direct you)



Everybody likes an underdog, right? Our lessons this month will focus on Gideon, whom the world saw as weak. God's people, the Israelites were in a heap of trouble from the oppression of their enemies. And God called the least of the least, Gideon, to bring them out of it.



early learning center earlylearning@peacelutheran.net
 303-431-4494

We're off and running for the 2024-25 school year. The Lord has blessed us with a great group of kids and teachers. Did you know that 13 staff members are currently serving 82 children? God is good! Thank you for your continued prayers and support as we share the love of Jesus to these children and their families AND teach them their ABCs and 123s!

Receivers for those with hearing loss are available from an usher.

Weekly Opportunities to Worship

- Sundays at **7:30a Peace To You KHOW radio: 630 AM 5a KOA: 850 AM**
- Sunday Worship/Communion **8a** (Traditional) **9:15a** (Education Hour) **10:30a** (Contemporary)
- Archived sermon links available at www.peacelutheran.net or khow.iheart.com/featured/peace-lutheran

Holy Communion:

Our beliefs about the Lord's Supper are available on the back of the attendance cards in the pew racks. We believe in the real presence of our Lord Jesus Christ in the bread and wine of communion.

worship

Last Sunday 8a 164 10:30a 272
First Fruit Offerings Report
 excluding approved surplus

Given to Date: \$442,428.48
 Needed to Date: \$400,994.00
 Ahead of Budget: \$41,434.48

We worship the Lord with our offerings.
First Fruit Giving

connect: adults

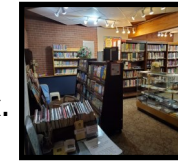
bible study fellowship

serve

church community world

The green Prayer Page has a full listing of adult classes being offered currently. A new slate of classes is underway. See you there!

The Library is open and available for your self-checkout use any time the building is open. Please sign the check-out card inside the material and drop it in the check-out box.



Is one of your favorite Bible verses John 13:34? ("A new commandment I give you: Love one another. As I have loved you, so you must love one another".) **Love as a Way of Life** by Gary Chapman (173 Cha) explores how love can be integrated into everyday actions and interactions. Chapman identifies seven key characteristics—kindness, patience, forgiveness, humility, courtesy, giving, and honesty—that embody a loving lifestyle. He provides practical guidance on how to cultivate these traits in relationships, helping people improve their connections with family, friends, and colleagues. The book emphasizes that love is not just an emotion but a choice that transforms lives and relationships when practiced consistently.

Mental Health Presentation: Guilt and Shame Are Not As Connected As We May Think. Presenter: Robyn Ruetz, licensed therapist. Wheat Ridge Lutheran Church, 8600 W 38th Ave. Sunday, November 10, 12p Noon. No charge, lunch provided. Register at dcs.sara3@gmail.com or call 513.509.8108.



Advent by Candlelight is Sat., Dec 7th at 6p. This is a multi-generational worship event for women. Please sign-up to attend or host a table on the credenza near the library. Contact Megan Eiseman 3.408-3802 for questions.



Altar Flowers are given to the glory of God by Wayne and Pam Perna in thanksgiving for 50 years of marriage.

Peace To You is on KHOW radio every Sunday morning at 7:30am. We reach so many with our radio ministry every week. In the office we are always getting calls from the folks out in radio land, telling us what a blessing our radio ministry is to them. Some are shut-ins and can't get to church, some are just unchurched. Please remember to support our radio ministry, it really does make a difference in the lives of so many!



Memorial Garden (Columbarium) Awareness Display

Want more information on the Peace Memorial Garden? Stop by the display on Nov. 3 to get more information. Single & double niches are available as well as Memorial or Special Message bricks. Memorial Garden Board members will be available to answer your questions. Coffee mugs also be available for a \$5 donation.



missions



Since 2002, the mission society has been helping the Siberian Lutheran Church spread the Gospel to people in far-flung areas of Siberia and other places in Russia and neighboring countries. In addition to helping fund the church's pastoral work, the mission society also took on responsibility

for ongoing support of the Siberian Church's seminary in Novosibirsk in 2017. While the Siberian Church remains small, it is resolute in its commitment to confessional Lutheran doctrine and practice, as is the Novosibirsk Seminary. The seminary is one of just two confessional Lutheran pastoral training schools still operating in Russia and surrounding countries. Keeping it open is essential to fulfilling the ministry of the Siberian Church in Russia. Please, will you continue your gracious support and consider giving an additional gift before 2024 draws to a close. Right now, a long-time donor has stepped forward to offer a matching gift of \$20,000 for contributions that the mission society receives before the end of the year. Will you help fulfill this matching gift offer? Go to siberianlutheranmissions.org.