

## Peace Lutheran Church

5675 Field Street, Arvada, CO 80002  
303-424-4454 303-940-7683 (fax)

www.peacelutheran.net  
Peace\_Lutheran\_Arvada  
peace\_lutheran\_arvada



PeaceArvada  
Peace Lutheran Church  
Peace Lutheran Church

### Peace Early Learning Center

303-424-4494 www.peaceelc.com

Peace Lutheran Social Ministry 303-424-4454 ex. 40



### Office Hours: 8:30a—4p Monday—Thursday

ELC School Year Hours: 8:15a—4p (M-Fr)  
Church Staff

Contact using 303.424.4454 using the listed extensions or via email.

- **Senior Pastor:** Rev. Guy Roberts x15
- **Associate Pastor:** Rev. Tim Lindeman x17
- **Director of Ministries:** Dawn Lubker x11
- **Adult Discipleship:** Kelsey Wilbern x22
- **Director of NexGen Ministry:** Lauren Von Rentzell x25
- **Director of Children's Ministry:** Lydia Massie x19
- **Director of Worship Arts:** Jill Schroeder Dorn x21
- **Ministry Assistant:** Sheryl Hofmeister x10
- **Financial Controller:** Gary Crocker x13
- **Financial Secretary:** Cathy Pierson 3/279.0530
- **Facilities Manager:** Kent Patton x33
- **Early Learning Center Director:** Angelica Gile 303.431.4494
- **Security Team Leader:** Jay Steele 720.236.5285

Check out this week's blog by our staff:  
<https://peacelutheran.net/blog>

ext. 0 for the main line/office  
groberts@peacelutheran.net  
tlindeman@peacelutheran.net  
dlubker@peacelutheran.net  
kwilbern@peacelutheran.net  
lvonrentzell@peacelutheran.net  
lmassie@peacelutheran.net  
jschroederdorn@peacelutheran.net  
shofmeister@peacelutheran.net  
gcrocker@peacelutheran.net  
crpierson@msn.com  
kpatton@peacelutheran.net  
earlylearning@peacelutheran.net  
security@peacelutheran.net

### Sunday, November 10

#### DU Burritos Sold After Services

8a Worship/Communion  
9:15a Bible Classes for all ages  
(see Prayer Page for listings/locations)  
10:30a Worship/Communion

### Monday, November 11

8a-4p Classical Conversations (downstairs)  
8:15a-4p Early Learning Center (Ed. Wing)  
6p Ringers of Peace (Sanctuary)  
6:30p Lay Teacher Training (Community Room)

### Tuesday, November 12

7a Men's Breakfast Bible Study (Community Rm)  
8:15a-4p Early Learning Center (Ed. Wing)  
10a Bible Study (A)  
11a BNI (Community Room)  
11:30a Ruth Circle (A)  
3p Whiz Kids (lower level)  
7p Stephen Ministry (A)

### Wednesday, November 13

8:15a-4p Early Learning Center (Ed. Wing)  
9a Staff Meeting (A)  
5:30-6:20p Life Together Supper (Community Room)  
6p Choir (Music Room)  
6:30p Life Together Classes for all ages  
(see Prayer Page for listings/locations)

### Thursday, November 14

8:15a-4p Early Learning Center (Ed. Wing)  
9a Library Circle (A)  
6p Knitting Group (Library)  
7p Divorce Care (A)

### Friday, November 15

8:15a-4p Early Learning Center (Ed. Wing)

### Saturday, November 16

10a GriefShare (A)

### Sunday, November 17

8a Worship/Communion  
9:15a Bible Classes for all ages  
(see Prayer Page for listings/locations)  
10:30a Worship/Communion

For anyone subscribing to **The Lutheran Witness**, Peace will no longer handle the renewal process. Please contact Concordia Publishing House directly by phone to renew at 1-800-325-3040 (option 2) or online <https://witness.lcms.org/subscribe/>



# Sunday, November 10, 2024

## 25th Sunday After Pentecost

*One ....*

One tree can start a forest;  
One smile can begin a friendship;  
One hand can lift a soul;  
One word can frame the goal;  
One candle can wipe out darkness;  
One laugh can conquer gloom;  
One hope can raise your spirits;  
One touch can show you care;  
One life can make the difference,

*Be that one today.* @InspiringThinkn

**Readings: Ecclesiastes 12:1-5; Philippians 3:12-13; John 4:1-4,39-45**

**Sermon: One Life Can Make A Difference**

**Guest Preacher: Pastor Mike Paulison**

### Order of Worship 8a DS4 p 203

Welcome  
*821 Alleluia! Sing to Jesus*  
Invocation, Confession and Absolution  
Kyrie Gloria in Excelsis Collect  
Readings Children's Message Gospel  
Creed  
Children's Message  
*712 Seek Ye First*  
Sermon  
Greeting  
First Fruits Offering  
Prayers  
Communion  
*725 Children of the Heavenly Father*  
*732 All Depends on Our Possessing*  
Benediction  
Announcements  
*783 Take My Life and Let It Be*

### Order of Worship 10:30a

Welcome/Invocation  
*Trust in God*  
Confession and Forgiveness  
*Living Hope*  
Readings  
Children's Message  
Gospel  
Creed  
Sermon  
Greeting  
Announcements  
First Fruits Giving  
*Be Okay*  
Prayers  
Communion  
*Cornerstone*  
*I Speak Jesus*  
Benediction  
Exit Song

### WELCOME TO PEACE

Thank you for choosing to worship with us. If you're new here or have questions, please stop by the Got Questions Booth, across the hallway from the sanctuary. Visitors are welcome to pickup a Bible as our gift to you. Children are most welcome in the service, but should you need it, there is a nursery for infants through 3-years-old, and a cry room located near the entrance of the sanctuary. Please fill out the attendance card in the pew and hand it to an usher during communion or as you exit the church.

Thank you & God bless your week!





**connect: nexgen ministry**  
 Lauren Von Rentzell Ivonrentzell@peacelutheran.net

**SUNDAYS DU (Disciples Unlimited: Grades 9-12)**  
 (Youth Room) Bible Study Sunday mornings at 9:15am

**PJs (Peace Juniors: Grades 6 - 8)**  
 Sundays @ 9:15a (Downstairs B) Confirmation Class for Grades 6 –8

**WEDNESDAYS** Grades 6-12 Youth Nights  
 Dinner at 6p Gather in the Youth Room at 6:30p

- November 13 Cocoa-venber Family Event 
- December 4 A-Door-Able Intergenerational Event 
- December 11 Operation Christmas Child @ the Processing Center 
- December 18 Christmas Cookie Potluck Intergenerational Event

**EVENTS FOR THE WHOLE FAMILY!**

**connect: children**

Lydia Massie lmassie@peacelutheran.net



Sign up for text updates for Children's Ministry.  
 Text @peacechi to 81010 to join the list

Register for  
**Sunday School**  
 Please follow the  
 link or QR code



**Midweek Dinner @ 5:30p Activities @ 6:30pm**  
 When: Wednesdays throughout the school year  
 (No classes Nov. 20 - Jan. 1, Resume Jan. 8)

**Sunday School: 9:15a–10:15a**  
 We will begin in the Community Room and the children (PK - 5th) will move, with their teachers, to activities.

**MEDIOCRE & MIGHTY** Everybody likes an underdog, right? Our lessons this month will focus on Gideon, whom the world saw as weak. God's people, the Israelites were in a heap of trouble from the oppression of their enemies. And God called the least of the least, Gideon, to bring them out of it.

**We are looking for some kids to take part in this year's Children's Christmas Program.**  
**General Information**

**Date:** December 15, late service only **Time:** Meet at 9 am in Children's Center  
**Practice Dates:** November 17th, December 1st & 8th after late service, December 14th - 10 am  
 Please let Lydia know as soon as possible if your child would like to participate.  
 There will be other roles available during the rest of the service such as ushers, greeters and music for those that don't want to participate in the skit.

November 13 Cocoa-venber Family Event December 4 6:30p A-Door-Able Intergenerational Event  
 December 18 6:30p Christmas Cookie Potluck Intergenerational Event

**early learning center** earlylearning@peacelutheran.net 303-431-4494  
 Peace ELC is excited to be hosting our annual Butter Braids Fundraiser. Orders are due by November 14th and will be delivered to the school on November 21st - just in time for Thanksgiving! Please use the QR code to order online, or utilize the paper order form outside of the sanctuary if paying with cash or check. Questions may be directed to Angelica Gile via email at [earlylearning@peacelutheran.net](mailto:earlylearning@peacelutheran.net) or by phone at (303) 431-4494. Thank you for your continued support!



**Receivers** for those with hearing loss are available from an usher.  
**Weekly Opportunities to Worship**  
 • Sundays at **7:30a Peace To You KHOW radio: 630 AM 5a KOA: 850 AM**  
 • Sunday Worship/Communion **8a** (Traditional) **9:15a** (Education Hour)  
**10:30a** (Contemporary)  
 • Archived sermon links available at [www.peacelutheran.net](http://www.peacelutheran.net) or [khow.iheart.com/featured/peace-lutheran](http://khow.iheart.com/featured/peace-lutheran)  
**Holy Communion:**  
 Our beliefs about the Lord's Supper are available on the back of the attendance cards in the pew racks. We believe in the real presence of our Lord Jesus Christ in the bread and wine of communion.

**worship**  
**Last Sunday 8a 196 10:30a 239**  
**First Fruit Offerings Report**  
 excluding approved surplus  
 Given to Date: \$475,179.07  
 Needed to Date: \$428,902.40  
 Ahead of Budget: \$46,726.67  
**We worship the Lord with our offerings.**  
**First Fruit Giving**

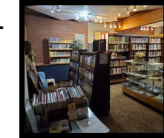
**connect: adults**  
 bible study fellowship

**serve**  
 church community world

**The green Prayer Page has a full listing of adult classes being offered currently. A new slate of classes is underway. See you there!**

If you can help by bringing a pie or two or help in the kitchen, please sign up at the credenza near the library.

The Library is open and available for your self-checkout use any time the building is open. Please sign the check-out card inside the material and drop it in the check-out box.



Do you have a favorite Psalm? Did you know the book of Psalms by itself is called the Psalter? Here is a book that you'll enjoy as it contains all 150 of the Old Testament Psalms along with commentary from Martin Luther on each one! This book is a translation of *Luther's Summaries of the Psalms, 1531* and is titled, **Reading the Psalms with Luther** (223.7 Lut) The commentaries demonstrate how Luther understood the Psalter as a Christ-centered book and how he used the psalms as the model for Christian prayer. Luther classifies each psalm as a psalm of prophecy, instruction, comfort, prayer, or thanksgiving and applies the message of the text to the life lived out under the cross. Luther also connects the psalms to the Ten Commandments and the petitions of the Lord's Prayer. For Luther, all aspects of the Christian's life, including the Psalms, relate to Christ and His Gospel of forgiveness, life, and salvation.



**Advent by Candlelight** is Sat., Dec 7, at 6p. This is a multi-generational worship event for women. Please sign-up to attend or host a table on the credenza near the library. Contact Megan Eiseman 3.408-3802 for questions.



**Operation Christmas Child Shoeboxes** are due back at the church by Wed., November 20th to be delivered to a collection site that evening. Late boxes will have to be delivered personally to the warehouse in Englewood.



**missions**

Since 2002, the mission society has been helping the Siberian Lutheran Church spread the Gospel to people in far-flung areas of Siberia and other places in Russia and neighboring countries. In addition to helping fund the church's pastoral work, the mission society also took on responsibility



for ongoing support of the Siberian Church's seminary in Novosibirsk in 2017. While the Siberian Church remains small, it is resolute in its commitment to confessional Lutheran doctrine and practice, as is the Novosibirsk Seminary. The seminary is one of just two confessional Lutheran pastoral training schools still operating in Russia and surrounding countries. Keeping it open is essential to fulfilling the ministry of the Siberian Church in Russia. Please, will you continue your gracious support and consider giving an additional gift before 2024 draws to a close. Right now, a long-time donor has stepped forward to offer a matching gift of \$20,000 for contributions that the mission society receives before the end of the year. Will you help fulfill this matching gift offer? Go to [siberianlutheranmissions.org](http://siberianlutheranmissions.org).

*Friends 55+ Ladies' Christmas Luncheon*  
**Monday, December 9, 11:30a**  
 No Cost  
 Invite a friend who is not a member of Peace  
 Make your reservation no later than December 1  
 Sign up at the Friends 55+ table  
 In the main hallway  
 or call Donna Brooks 303-478-4272  
 Menu: Choice of 2 Soups, Mixed Green Salad/Dressing, Crusty Artisan Bread/Butter, Christmas Dessert, Beverage