

Peace Lutheran Church

5675 Field Street, Arvada, CO 80002
303-424-4454 303-940-7683 (fax)

www.peacelutheran.net
Peace_Lutheran_Arvada
peace_lutheran_arvada



PeaceArvada
Peace Lutheran Church
Peace Lutheran Church



Follow this QR Code to LinkTree to get direct links to all kinds of Peace info!

For easy access:
Once open click on the 3 dots in the upper right corner, scroll down to 'Add to Home Screen'

Peace Early Learning Center

303-424-4494 www.peaceelc.com

Peace Lutheran Social Ministry

303-424-4454 ex. 40
DS3 p 184

Office Hours: 8:30a—4p Monday—Thursday

ELC School Year Hours: 8:15a—4p (M-Fr)

Church Staff

Contact using 303.424.4454 using the listed extensions or via email.

- **Senior Pastor:** Rev. Guy Roberts x15
- **Associate Pastor:** Rev. Tim Lindeman x17
- **Director of Ministries:** Dawn Lubker x11
- **Adult Discipleship:** Kelsey Wilbern x22
- **Director of NexGen Ministry:** Lauren Von Rentzell x25
- **Director of Children's Ministry:** Lydia Massie x19
- **Director of Worship Arts:** Jill Schroeder Dorn x21
- **Ministry Assistant:** Sheryl Hofmeister x10
- **Financial Controller:** Gary Crocker x13
- **Financial Secretary:** Cathy Pierson 3/279.0530
- **Facilities Manager:** Kent Patton x33
- **Early Learning Center Director:** Angelica Gile 303.431.4494
- **Security Team Leader:** Jay Steele 720.236.5285

Check out this week's blog by our staff:
<https://peacelutheran.net/blog>

- ext. 0 for the main line/office
groberts@peacelutheran.net
- tindeman@peacelutheran.net
- dlubker@peacelutheran.net
- kwilbern@peacelutheran.net
- lvonrentzell@peacelutheran.net
- lmassie@peacelutheran.net
- jschroederdorn@peacelutheran.net
- shofmeister@peacelutheran.net
- gcrocker@peacelutheran.net
- crpierson@msn.com
- kpatton@peacelutheran.net
- earlylearning@peacelutheran.net
- security@peacelutheran.net

Sunday, December 1

Guatemala Trip Sign Up Deadline

- 8a Worship/Communion
- 9:15a Bible Classes for all ages
(see Prayer Page for listings/locations)
- 10:30a Worship/Communion

Monday, December 2

- 8:15a-4p Early Learning Center
- 8a-3p Classical Conversations (thru-out bldg)
- 6p Ringers of Peace (Sanctuary)

Tuesday, December 3

- 7a Men's Breakfast Bible Study (Community Rm)
- 8:15a-4p Early Learning Center
- 10a Bible Study (A)
- 11a BNI (Community Room)
- 1p Lydia Circle (A)
- 3p Whiz Kids (basement)
- 6:30p Church Council (A)

Wednesday, December 4

- 8:15a-4p Early Learning Center
- 9a Staff Meeting (A)
- 6p Midweek Advent Worship (Sanctuary)
- 6:30p A-Door-Able Intergenerational Event

Thursday, December 5

- 8:15a-4p Early Learning Center

- 7p Divorce Care (A)
- 7p Young Adult Bible Study (Lindemans')

Friday, December 6

- 8:15a-4p Early Learning Center

Saturday, December 7

- 10a GriefShare (A)
- 6p Advent by Candlelight (Community Rm)

Sunday, December 8 ELC First Sunday Treats

- 8a Worship/Communion
- 9:15a Bible Classes for all ages
(see Prayer Page for listings/locations)
- 10:30a Worship/Communion
- 11a Women's Christmas Luncheon Set-Up (Café)

Sunday, December 1, 2024

1st Sunday of Advent



Readings: Jeremiah 33:14-16; Luke 21:25-36

Sermon: One of Those Days

Preacher: Pastor Tim Lindeman

Order of Worship 8a DS3 p 184

- Welcome
- 331 The Advent of Our King*
- Invocation Confession and Absolution
- Gloria Patri Kyrie Gloria in Excelsis Collect
- Readings Children's Message Gospel
- Creed
- 332 Savior of the Nations Come*
- Sermon
- Greeting
- First Fruits Offering
- Prayers
- Communion
- 340 Lift Up Your Heads Ye Mighty Gates*
- 342 What Hope! An Eden Prophesied*
- Benediction
- Announcements
- 359 Lo How a Rose E'er Blooming*

Order of Worship 10:30a

- Welcome
- Invocation
- King of Kings I Believe*
- Prayers
- Readings
- Creed
- Gospel
- Children's Message
- Sermon
- Greeting
- Announcements
- First Fruits Giving
- O Come All You Unfaithful*
- Confession and Forgiveness
- Lord's Prayer
- Communion
- Firm Foundation*
- Benediction
- Exit Song

WELCOME TO PEACE

Thank you for choosing to worship with us. If you're new here or have questions, please stop by the Got Questions Booth, across the hallway from the sanctuary. Visitors are welcome to pickup a Bible as our gift to you. Children are most welcome in the service, but should you need it, there is a nursery for infants through 3-years-old, and a cry room located near the entrance of the sanctuary.

Would you please take a minute to fill out the attendance card in the pew rack in front of you? If you are interested in membership at Peace you can leave you contact information on the attendance card or use the Big QR code on the back page of this bulletin. Follow that link and click Interested in Membership. Fill out that brief form and Kelsey Wilbern, our New Member Coordinator will reach out to assist you. Thank you & God bless your week!

connect: nexgen ministry
Lauren Von Rentzell Ivonrentzell@peacelutheran.net

SUNDAYS DU (Disciples Unlimited: Grades 9-12)
(Youth Room) Bible Study Sunday mornings at 9:15am

PJs (Peace Juniors: Grades 6 - 8)
Sundays @ 9:15a (Downstairs B) Confirmation Class for Grades 6 -8

WEDNESDAYS Grades 6-12 Youth Nights
Gather in the Youth Room at 6:30p

 December 4 A-Door-Able Intergenerational Event

December 11 Operation Christmas Child @ the Processing Center
Teens and Adults are invited to participate
see Lauren for sign-up information



 December 18 Christmas Cookie Potluck Intergenerational Event

connect: children

Lydia Massie lmassie@peacelutheran.net



Sign up for text updates for Children's Ministry.
Text @peacechi to 81010 to join the list

Midweek Dinner @ 5:30p Activities @ 6:30pm

When: Wednesdays throughout the school year
(No classes Nov. 20 - Jan. 1, Resume Jan. 8)

Sunday School: 9:15a-10:15a

We will begin in the Community Room and the children (PK - 5th) will move, with their teachers, to activities.

Sing It! This Christmas we study the advent songs in Luke's Gospel. Each one has a special message about God's faithfulness and the promises He kept by sending Jesus to us.

We are looking for some kids to take part in this year's Children's Christmas Program.

General Information

Date: December 15, late service only **Time:** Meet at 9 am in Children's Center

Practice Dates: December 1st & 8th after late service, December 14th - 10 am

Please let Lydia know as soon as possible if your child would like to participate.

There will be other roles available during the rest of the service such as ushers, greeters and music for those that don't want to participate in the skit.



ushers, greeters and



December 4 6:30p A-Door-Able Intergenerational Event

December 18 6:30p Christmas Cookie Potluck Intergenerational Event

early learning center earlylearning@peacelutheran.net 303-431-4494

Thank you to everyone who participated in the Butter Braids Fundraiser! If you haven't picked yours up yet arrangements can be made with the ELC director, Angelica Gile. She is available by email at earlylearning@peacelutheran.net or by phone at (303) 431-4494.

Receivers for those with hearing loss are available from an usher.

Weekly Opportunities to Worship

- Sundays at **7:30a Peace To You KHOW radio: 630 AM 5a KOA: 850 AM**
- **Coming Soon! Peace to You Podcast—watch for more details**
- Sunday Worship/Communion **8a** (Traditional) **9:15a** (Education Hour) **10:30a** (Contemporary) Archived sermon links available at www.peacelutheran.net
- **Holy Communion:** Our beliefs about the Lord's Supper are available on the back of the attendance cards in the pew racks. We believe in the real presence of our Lord Jesus Christ in the bread and wine of communion. If you have any questions, please feel free to talk with a pastor or an elder. Grape juice is available in the center cup of the tray. Gluten free wafers are available as well.

worship

Last Sunday 8a 185 10:30a 246

First Fruit Offerings
excluding approved surplus

Given to Date: \$534,607
Needed to date: \$494,022
Ahead of Budget: \$40,585

Church Expenses
Spent to Date: \$531,253
Budget to Date: \$579,714
Under Budget: \$48,461

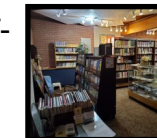


connect: adults

bible study fellowship

The green Prayer Page has a full listing of adult classes being offered currently. A new slate of classes is underway. See you there!

The Library is open and available for your self-checkout use any time the building is open. Please sign the check-out card inside the material and drop it in the check-out box.



Here is a non-fiction book that will surely inspire you as you read this true account of author Elisabeth Elliot: **Secure in the Everlasting Arms - Trusting the God Who Never Leaves Your Side** (248.4 Ell). In a life filled with uncertainty, former missionary Elisabeth Elliot clung to God who never left her side. Through the deaths of two husbands, a life of travel and danger, and raising her daughter as a single parent, God provided Elliot with a security that could not have come from relying on the world. Here, you are invited to join her as she recounts how she relied on God during some of the most amazing and difficult events of her life. A must read!



Advent by Candlelight is Sat., Dec 7, at 6p. This is a multi-generational worship event for women. Please sign-up to attend or host a table on the credenza near the library. Contact Megan Eiseman 3.408-3802 for questions.



Giving Made Simple

Text 8447915486

(min. donation \$3)

1. Get Started

Text the amount you want to give (for ex. 100) to 8447915486, then press send.

2. Register

The first time only you will receive a registration link. Click the link and enter your contact information. You will only have to do this once.

3. Give to First Fruits

repeat step 1: Get Started.

4. To give to a specific fund: Text 'Funds' to the number. Wait for a return text listing the fund choices. Then type in the donation amount, space, then fund name and then press send. (ex. 10 FFruits) (dollar sign not necessary; decimal point accepted)

You will receive a verification text as well as a receipt via email. Donations will also be reflected on the year end statement you receive from Peace.

Repeat the donation process if you want to give to other funds.

For extra ease make this number a contact in your phone!

Friends 55+
Ladies' Christmas Luncheon
Monday, December 9, 11:30a
No Cost
Invite a friend who is not a member of Peace

Make your reservation no later than December 1
Sign up at the Friends 55+ table
In the main hallway
or call Donna Brooks 303-478-4272
Menu: Choice of 2 Soups, Mixed Green Salad/Dressing, Crusty Artisan Bread/ Butter, Christmas Dessert, Beverage



LuHi Christmas:
Dec. 9, 7:30p
Dec. 10 5p & 7:30p

OUR SAVIOR CHRIST BEHOLD



A LuHi Christmas | December 9 at 7:30pm & December 10, 5 and 7:30pm
In the LuHi Gym | Tickets are free but space is limited.