

Peace Lutheran Church  
5675 Field Street, Arvada, CO 80002  
303-424-4454  
www.peacelutheran.net  
Peace\_Lutheran\_Arvada  
peace\_lutheran\_arvada

PeaceArvada  
Peace Lutheran Church  
Peace Lutheran Church

Peace Early Learning Center  
303-424-4494 www.peaceelc.com  
Peace Lutheran Stephen Ministry 303-424-4454 x24  
Peace Lutheran Social Ministry 303-424-4454 x40



Follow this QR Code to Link Tree to get direct links to all kinds of Peace info!  
For easy access:  
Once open click on the 3 dots in the upper right corner, scroll down to 'Add to Home Screen'

Office Hours: 8:30a—4p Monday—Thursday  
ELC School Year Hours: 8:15a—4p (M-Fr)

Check out this week's blog by our staff:  
<https://peacelutheran.net/blog>

- Church Staff**  
Contact using 303.424.4454 using the listed extensions or via email.
- **Senior Pastor:** Rev. Guy Roberts x15
  - **Associate Pastor:** Rev. Tim Lindeman
  - **Director of Ministries:** Dawn Lubker x11
  - **New Member Coordinator:** Kelsey Wilbern x22
  - **Director of NexGen Ministry:** Lauren Von Rentzell x25
  - **Director of Children's Ministry:** Amy Bomareto x19
  - **Director of Worship Arts** Dr. Jill Schroeder Dorn x21
  - **Ministry Assistant:** Sheryl Hofmeister x10
  - **Interim Financial Controller** Angie Habben x13
  - **Financial Secretary** Cathy Pierson 3/279.0530
  - **Facilities Manager:** Kent Patton x33
  - **Early Learning Center Director:** Angelica Gile 303.431.4494
  - **Security Team Leader:** Jay Steele 720.236.5285

ext. 0 for the main line/office  
groberts@peacelutheran.net  
tlindeman@peacelutheran.net  
dlubker@peacelutheran.net  
kwilbern@peacelutheran.net  
lvonrentzell@peacelutheran.net  
abomareto@peacelutheran.net  
jschroederdorn@peacelutheran.net  
shofmeister@peacelutheran.net  
ahabben@peacelutheran.net  
crpierson@msn.com  
kpatton@peacelutheran.net  
earlylearning@peacelutheran.net  
security@peacelutheran.net

- Sunday, February 1**  
8a Worship/Communion  
9:15a Sunday School, Youth, Adult Bible Study  
10:30a Worship/Communion/Baptism
- Monday, February 2**  
6p Ringers of Peace (Sanctuary)
- Tuesday, February 3**  
7a Men's Breakfast Bible Study  
8:15a-4p Early Learning Center  
10a Bible Study (A)  
11a BNI (Community Rm)  
1p Lydia Circle (A)
- Wednesday, February 4**  
8:15a-4p Early Learning Center  
9a Ministry Team Meeting (A)  
6p Adult Choir (Music Room)  
6:30p Confirmation Class (Community Room)  
Adult Bible Class (A)  
7p Worship Team Rehearsal (Sanctuary)
- Thursday, February 5**  
8:15a-4p Early Learning Center  
7p Divorce Care (A)  
7p Young Adult Bible Study (Chen's)
- Friday, February 6**  
8:15a-4p Early Learning Center

- Saturday, February 7**  
10a GriefShare (A)  
11a Men's Cornhole/Pizza Event (Community Room)
- Sunday, February 8 DU Burritos**  
8a Worship/Communion  
9:15a Sunday School, Youth, Adult Bible Study  
10:30a Worship/Confirmation



# February 1, 2026 4th Sunday after the Epiphany



Readings: Daniel 3:19-27; Luke 12:4-7  
*Daniel in Exile* Preacher: Pr Tim Lindeman

- 8a Order of Worship** DS3 pg. 184
- Welcome  
904 Blessed Jesus At Your Word  
Invocation, Confession & Absolution  
Kyrie Hymn of Praise Collect  
Readings Children's Message Creed  
724 If God Himself Be For Me  
Sermon  
Meet and Greet  
First Fruits Offering/Didn't the Lord Deliver Daniel  
Prayers  
Communion  
709 The King of Love My Shepherd Is  
730 What Is The World To Me  
Dismissal/Prayer  
Benediction  
Announcements  
732 All Depends On Our Possessing

- Order of Worship 10:30a**
- Welcome/Invocation  
Baptisms  
We, Too, Have Overcome  
Prayers  
King of My Heart  
Readings  
Children's Message  
Creed  
Sermon  
Meet & Greet  
Announcements  
First Fruits Giving  
Confidence  
Confession & Forgiveness  
Communion  
Trust in God The Way  
Benediction  
Closing Song

**WELCOME TO PEACE**

Thank you for choosing to worship with us. If you're new here or have questions, please stop by the Got Questions Booth, across the hallway from the sanctuary. Visitors are welcome to pickup a Bible as our gift to you. Children are most welcome in the service, but should you need it, there is a nursery for infants through 3-years-old, and a cry room located near the entrance of the sanctuary.

Would you please take a minute to fill out the attendance card in the pew rack in front of you?

If you are interested in membership at Peace you can leave your contact information on the attendance card or use the Big QR code on the back page of this bulletin. Follow that link and click Interested in Membership. Fill out that brief form and Kelsey Wilbern, our New Member Coordinator will reach out to assist you.

Thank you & God bless your week!



connect: nexgen ministry  
Lauren Von Rentzell    lvonrentzell@peacelutheran.net

DU (Disciples Unlimited: Grades 9-12)

Sunday mornings 9:15am  
Join us at our table in the Community Room  
Sunday evenings, 6p at the Von Rentzell's house

Sunday, Feb. 22, after church  
Mission Trip Meeting

Mini Lock Inf for DU & PJs March 14, 5p-12a

PJs (Peace Juniors: Grades 6 - 8)  
Sundays @ 9:15a Downstairs in the Youth Room with Bill Martchenke  
Confirmation Classes Wednesdays @ 6:30p Community Room

1st Communion Class  
Early Communion Class for those in 5th grade or older. Saturday, March 7, 9-11a  
Please contact the church office if you and your child will be attending.



Check your weekly youth email for more information, registration, sign-ups, and payment information. Adult Volunteers can also sign up to help within the email.

connect: children  
Amy Bomareto    abomareto@peacelutheran.net

Save the Date VBS: June 8-12



Sunday School

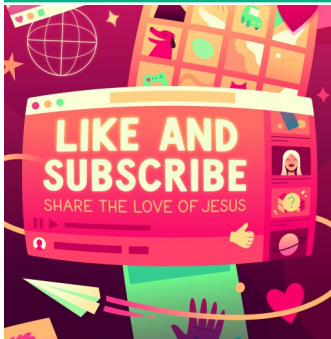
3-5 yrs old



Jesus and the Children

People bring children to see Jesus, but the disciples try to stop them, thinking Jesus doesn't want to spend time with children. But Jesus corrects them and says, "Let the children come to me. Don't stop them!" Jesus takes the children in His arms and blesses them. He shows the disciples—and everyone—that children are important to Him. They are important to God's kingdom! And Jesus loves them.

1st— 5th Grade

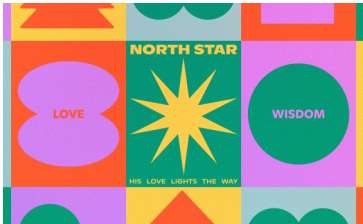


Jesus Teaches Nicodemus

We start off as Nicodemus visits Jesus at night. While Nicodemus struggles to understand how a grown-up could be born again, Jesus challenges him to see with new eyes. John, recording this scene, interprets for us: "God so loved the world that he gave his one and only Son. Anyone who believes in him will not die but will have eternal life." [BOTTOM LINE] God loves the whole world.

Mom's Day Out: Coming in February  
Watch for Details

6th—8th Grade



THIS WEEK:

1 Samuel 17:29-31

Question Leads to Clarity

Receivers for those with hearing loss are available from an usher.  
Weekly Opportunities to Worship  
Peace to You Podcast— youtube.com/@PeaceToYouCrew  
OR Go to PodBean using the following link: https://dracolord262.podbean.com/. There you'll be able to connect to several apps where Peace 2 You will be broadcast. Spotify-Amazon Music-Audible-Boomplay -iHeart Radio-Player FM-Podchaser  
• Sunday Worship/Communion 8a (Traditional) 10:30a (Contemporary)  
• 9:15a (Discipleship Hour)  
• Archived sermon links available at www.peacelutheran.net  
• Holy Communion: As Lutheran Christians, we believe, teach and confess that the risen Lord Jesus Christ is actually present in the Sacrament of Holy Communion. He gives us His true body and blood in, with and under the bread and wine for the forgiveness of our sins. This teaching of the real presence of Christ is central to our celebration of this sacrament. Therefore, we practice fellowship or close communion—meaning we believe those approaching the altar should share this core belief. Grape juice is available in the center cup of the tray. Gluten free wafers also available.

connect: adults

bible study fellowship

The green Prayer Page has a full listing of adult classes being offered currently.

Library: Double the Lies by Patricia Raybon (F Ray) follows amateur detective Annalee Spain in 1924 Denver as she tries to solve the murder of a barnstorming pilot while fighting to clear her own name when evidence wrongly points to her involvement in the crime. Annalee's investigation draws her into a web of secrets and prejudice in a city where the Ku Klux Klan influences the police, and her pastor boyfriend Jack Blake goes missing, forcing her to race against time. Set against the glamorous yet dangerous backdrop of the Colorado mountains, the story blends historical intrigue, personal danger, and a budding romantic tension. Throughout the novel, Annalee's faith and courage are tested as she navigates racism, hidden family truths, and deception that could cost her life and love.

Thursdays, 6:30p, Feb. 5—Mar 12.  
Marriage can get a little wild at times. It's to be expected, with two selfish people trying to live in a relationship God designed to be selfless. But there is much joy to be found in marriage & God's gives us guidance. If you would like His help with your marriage or are preparing for marriage, we encourage you to be a part of this year's Love and Respect class. \$10 /workbook. Call the church office to enroll.



THE STORY  
GETTING TO THE HEART OF GOD'S STORY

February 1:  
Daniel in Exile

February 8:  
The Return Home

Learn How God's Story is Your Story!

worship

Last Sunday 8a 152 10:30a 216

First Fruit Offerings as of 1/11/26

excluding approved surplus  
Given to Date: \$681,406  
Needed to date: \$671,401  
Over Budget: \$9,997

Church Expenses  
Fiscal Year: July –June  
Spent to Date: \$667,440  
Budget to Date: \$775,930  
Under Budget: \$108,490



Text to Give  
7915486

serve

church community world

Mission Trip Meeting Sunday, February 22, Noon

We Care Initiative: In 2025-26 Peace will strive to:  
•Partner with local businesses to serve our community  
•Build as many houses, for as many families, in as many places as possible  
⇒ June 13-20: Dominican Republic  
⇒ July 25-Aug 1 - Guatemala  
Mission Trip Information Packets are available at the 'house' in the main hallway.  
Mission Trip Meeting: February



Altar Guild is in need of a few more helpers to prepare the Lord's Supper each week on a rotating schedule. Please contact Sharon Nigh 3.587-6893 if you are willing to help!

Our GriefShare program reaches out to those grieving a loss in both our church and our communities? Through your giving, you are supporting this Christian outreach that allows grieving people to have a safe, caring place to share their feelings and begin to heal.

COMMUNITY Please support the Community Table which is in urgent need of canned goods such as meats, fruits, and vegetables. They are also in need of volunteers. Cash donations can be made online or drop off food donations at For more information or to volunteer call 303-424-6685.



partners in ministry

One of our Partners in Ministry (groups supported by Peace's tithing of the first fruit offerings we receive) is the Rocky Mountain District LWML. Among their many missions and projects is a scholarship fund which helps those training to go into church work. By supporting them, we also support the education of future church workers!

