

Peace Lutheran Church
5675 Field Street, Arvada, CO 80002
303-424-4454
www.peacelutheran.net
Peace_Lutheran_Arvada
peace_lutheran_arvada

PeaceArvada
Peace Lutheran Church
Peace Lutheran Church

Peace Early Learning Center
303-424-4494 www.peaceelc.com
Peace Lutheran Stephen Ministry 303-424-4454 x24
Peace Lutheran Social Ministry 303-424-4454 x40



Follow this QR Code to Link Tree to get direct links to all kinds of Peace info!
For easy access:
Once open click on the 3 dots in the upper right corner, scroll down to 'Add to Home Screen'

Office Hours: 8:30a—4p Monday—Thursday
ELC School Year Hours: 8:15a—4p (M-Fr)

Check out this week's blog by our staff:
<https://peacelutheran.net/blog>

- Church Staff
- Contact using 303.424.4454 using the listed extensions or via email.
- Senior Pastor: Rev. Guy Roberts x15
 - Associate Pastor: Rev. Tim Lindeman
 - Director of Ministries: Dawn Lubker x11
 - New Member Coordinator: Kelsey Wilbern x22
 - NexGen Ministry Coordinator: Lauren Von Rentzell x25
 - Children's Ministry Coordinator: Amy Bomareto x19
 - Director of Worship Arts Dr. Jill Schroeder Dorn x21
 - Ministry Assistant: Sheryl Hofmeister x10
 - Financial Coordinator Joey Schilling x13
 - Financial Secretary Cathy Pierson 3/279.0530
 - Facilities Manager: Kent Patton x33
 - Early Learning Center Director: Angelica Gile 303.431.4494
 - Security Team Leader: Jay Steele 720.236.5285

ext. 0 for the main line/office
groberts@peacelutheran.net
tlindeman@peacelutheran.net
dlubker@peacelutheran.net
kwilbern@peacelutheran.net
lvonrentzell@peacelutheran.net
abomareto@peacelutheran.net
jschroederdorn@peacelutheran.net
shofmeister@peacelutheran.net
jschilling@peacelutheran.net
crpierson@msn.com
kpatton@peacelutheran.net
earlylearning@peacelutheran.net
security@peacelutheran.net

Sunday, February 22
8a Worship/Communion
9:15a Sunday School, Youth, Adult Bible Study
10:30a Worship/Baptism
11:45a Voters' Meeting (Community Room)
Noon Mission Trip Meeting (Community Room)
Monday, February 23
8:15a-4p Early Learning Center
6p Ringers of Peace (Sanctuary)
Tuesday, February 24
7a Men's Breakfast Bible Study
8:15a-4p Early Learning Center
10a Bible Study (A)
11a BNI (Community Rm)
4p Social Ministry

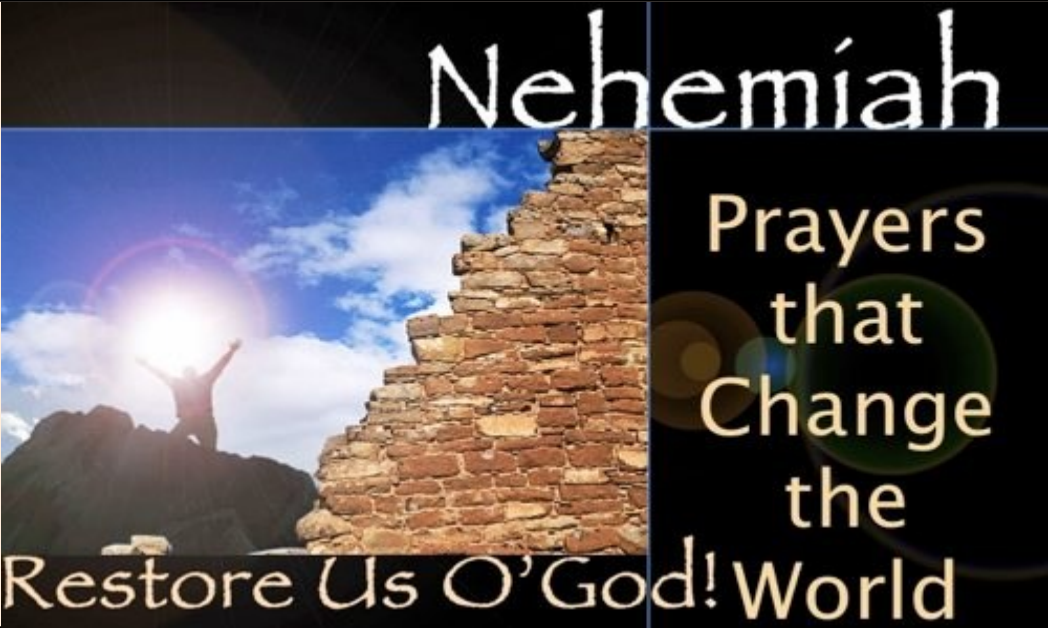
Wednesday, February 25
8:15a-4p Early Learning Center
9a Ministry Team Meeting (A)
4:30p Midweek Lent Worship
6p Midweek Lent Worship
6:30p Adult Choir (Music Room)
6:30p Confirmation Class (Community Room)
Adult Bible Class (A)
7p Worship Team Rehearsal (Sanctuary)

Thursday, February 26
6p Knitting Group (Library)
6:30p Jessen Small Group (B)
6:30p Love and Respect (Café)
7p Divorce Care (A)

Friday, February 27
Saturday, February 28
10a GriefShare (A)
Sunday, March 1 Merry Christmas, Again!
8a Worship/Communion
9:15a Sunday School, Youth, Adult Bible Study
10:30a Worship/Communion
11:45a Voters' Meeting (Community Room)
Noon Mission Trip Meeting (Community Room)



February 22, 2026 1st Sunday in Lent



Readings: Nehemiah 1:1-9; Mark 1:1-8
Rebuilding the Walls

8a Order of Worship DS2 pg. 167

Welcome
584 Faith and Truth and Life Bestowing
Invocation, Confession & Absolution
Kyrie Hymn of Praise Collect
Readings Children's Message Creed
543 What Wondrous Love Is This
Sermon
Meet and Greet
First Fruits Offering/ The Old Rugged Cross
Prayers
Communion
606 I Lay My Sins On Jesus
617 O Lord, We Praise Thee
Dismissal/Prayer
Benediction
Announcements
923 Almighty Father Bless The Word

Order of Worship 10:30a

Welcome/Invocation/Baptism
I Believe
Confession & Forgiveness
Graves Into Gardens
Readings
Children's Message
Creed
Build My Life
Sermon
Meet & Greet
Announcements
First Fruits Giving/ Only A Holy God
Prayers
Benediction
Closing Song

WELCOME TO PEACE

Thank you for choosing to worship with us. If you're new here or have questions, please stop by the Got Questions Booth, across the hallway from the sanctuary. Visitors are welcome to pickup a Bible as our gift to you. Children are most welcome in the service, but should you need it, there is a nursery for infants through 3-years-old, and a cry room located near the entrance of the sanctuary. Would you please take a minute to fill out the attendance card in the pew rack in front of you? If you are interested in membership at Peace you can leave your contact information on the attendance card or use the Big QR code on the back page of this bulletin. Follow that link and click Interested in Membership. Fill out that brief form and Kelsey Wilbern, our New Member Coordinator will reach out to assist you. Thank you & God bless your week!

connect: nexgen ministry
Lauren Von Rentzell lvonrentzell@peacelutheran.net

DU (Disciples Unlimited: Grades 9-12)

Sunday mornings 9:15am
Join us at our table in the Community Room

Sunday evenings, at the Von Rentzell's house
2/22 5p Guys and Girls Nite

TODAY after church
Mission Trip Meeting

Mini Lock Inf for DU & PJs March 14, 5p-12a

PJs (Peace Juniors: Grades 6 - 8)
Sundays @ 9:15a Downstairs in the Youth Room with Bill Martchenke
Confirmation Classes Wednesdays @ 6:30p Community Room



Early Communion Class for those in 5th grade or older. Saturday, March 7, 9-11a
Please contact the church office if you and your child will be attending.



Check your weekly youth email for more information, registration, sign-ups, and payment information. Adult Volunteers can also sign up to help within the email.

connect: children
Amy Bomareto abomareto@peacelutheran.net



VBS: June 8-12

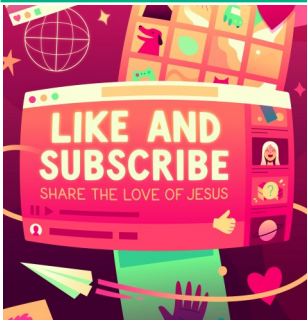


Sunday School

3-5 yrs old



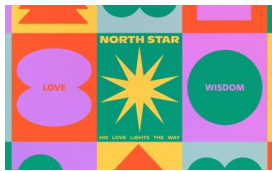
1st— 5th Grade



HEY YOU! DID YOU KNOW.....
Easter changes everything!
The story didn't end at the cross. Darkness didn't have the final word. Death wasn't the conclusion. It was the turning point.

Join us on March 29th after late service as we get ready for one amazing week celebrating Christ's resurrection!
ALL AGES WELCOME!! Yes... really... 0-100 years old. INVITE YOUR FRIENDS!

6th—8th Grade



Say It Now
Love Over Temptation
Titus 1:4; Ephesians 4:29; Hebrews 3:13; Proverbs 12:25

Jesus Forgives a Woman
Jesus is teaching when a group of people brings Him a woman who was caught doing something wrong. The people want to know if Jesus will keep God's rules or show God's love. Jesus tells them that anyone without sin can punish the woman, and one by one, they all leave. Jesus tells the woman to do what God wants her to do, but He does not punish her. Jesus shows us that God sent Him to love and forgive us, because Jesus loves us no matter what!

Jesus Heals Jairus' Daughter and a Suffering Woman
We wrap up the month with Jairus, a synagogue leader, who begs Jesus to come heal his gravely ill daughter. While Jesus is on the way, a desperate woman with a chronic illness pushes through the crowd to touch his robe... and is instantly made well. Jesus doesn't discriminate between the wealthy and the outcast; instead, he responds to anyone in need.
[BOTTOM LINE] Show the love of Jesus to people in need.

Receivers for those with hearing loss are available from an usher.
Weekly Opportunities to Worship
Peace to You Podcast— youtube.com/@PeaceToYouCrew
OR Go to PodBean using the following link: https://dracolord262.podbean.com/. There you'll be able to connect to several apps where Peace 2 You will be broadcast. Spotify-Amazon Music-Audible-Boomplay -iHeart Radio-Player FM-Podchaser
• Sunday Worship/Communion 8a (Traditional) 10:30a (Contemporary)
• 9:15a (Discipleship Hour)
• Archived sermon links available at www.peacelutheran.net
• Holy Communion: As Lutheran Christians, we believe, teach and confess that the risen Lord Jesus Christ is actually present in the Sacrament of Holy Communion. He gives us His true body and blood in, with and under the bread and wine for the forgiveness of our sins. This teaching of the real presence of Christ is central to our celebration of this sacrament. Therefore, we practice fellowship or close communion—meaning we believe those approaching the altar should share this core belief. Grape juice is available in the center cup of the tray. Gluten free wafers also available.

connect: adults

bible study fellowship

The green Prayer Page has a full listing of adult classes being offered currently.

Library: The Spirituality of the Cross – The Way of the First Evangelicals by Gene Edward Veith, Jr. (230.41 Vei) presents a distinctive Lutheran vision of Christian spirituality that centers on Christ's crucifixion as the heart of faith rather than on human effort or mystical experience. The book explores key Lutheran doctrines—justification by faith, the "theology of the cross," vocation in everyday life, and the reality of living in both earthly and spiritual kingdoms—showing how ordinary life becomes spiritually meaningful. Books and DVDs for Lent and Easter for both kids and adults are currently displayed on the cart and checkout stand at the library entrance. Come check them out!

MOM'S NIGHT OUT!
TOMORROW!
Monday, February 23
Panera Bread
7739 Wadsworth, Arvada
Join us for some meaningful conversations and food (or just a beverage!). This is a laid back evening to spend time with other Moms laughing and getting to know one another. We will have an area sort of reserved at 6:30p but feel free to come as you are free. Please RSVP so we know to expect you.



worship

Last Sunday 8a 172 10:30a 260

First Fruit Offerings as of 2/4/26

excluding approved surplus
Given to Date: \$773,929
Needed to date: \$766,457
Over Budget: \$7,471.82

Church Expenses
Fiscal Year: July –June
Spent to Date: \$773,703
Budget to Date: \$898,842
Under Budget: \$125,139



Text to Give
7915486

serve

church community world



Altar Flowers are given to the glory of God by Sam and Nancy Grossman in memory of Nancy's parents, Bill and Virginia Paracka.

Special Voters' Meeting
Sunday, February 22, 11:45a

1st Reading of Constitution Changes
Approval of Mission Fund Bylaws
Check your weekly email for copies of the changes or contact the church office.

Mission Trip Meeting
Sunday, February 22, Noon

We Care Initiative: In 2025-26 Peace will strive to:

- Partner with local businesses to serve our community
 - Build as many houses, for as many families, in as many places as possible
- ⇒ June 13-20: Dominican Republic
⇒ July 25-Aug 1 - Guatemala
Mission Trip Information Packets are available at the 'house' in the main hallway.



Please support the Community Table which is in urgent need of canned goods such as meats, fruits, and vegetables. They are also in need of volunteers. Cash donations can be made online or drop off food donations at For more information or to volunteer call 303-424-6685.

partners in ministry

One of our Partners in Ministry (groups supported by Peace's tithing of the first fruit offerings we receive) is the Rocky Mountain District LWML. Among their many missions and projects is a scholarship fund which helps those training to go into church work. By supporting them, we also support the education of future church workers!

